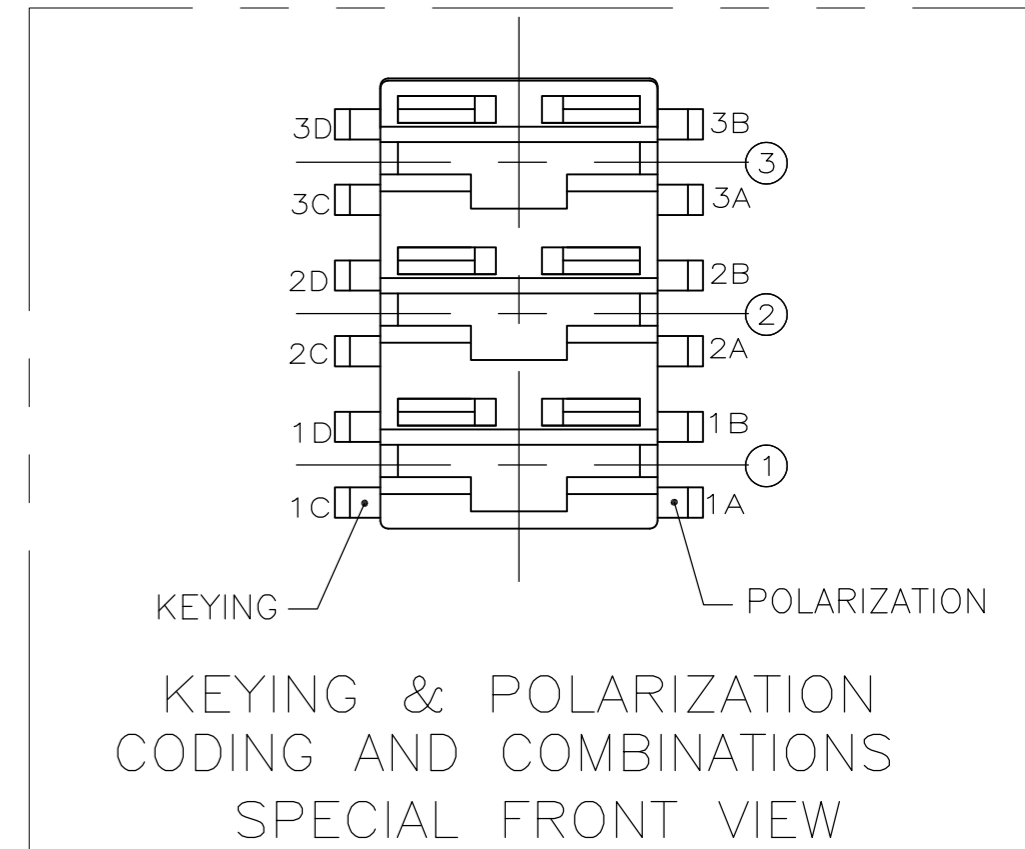
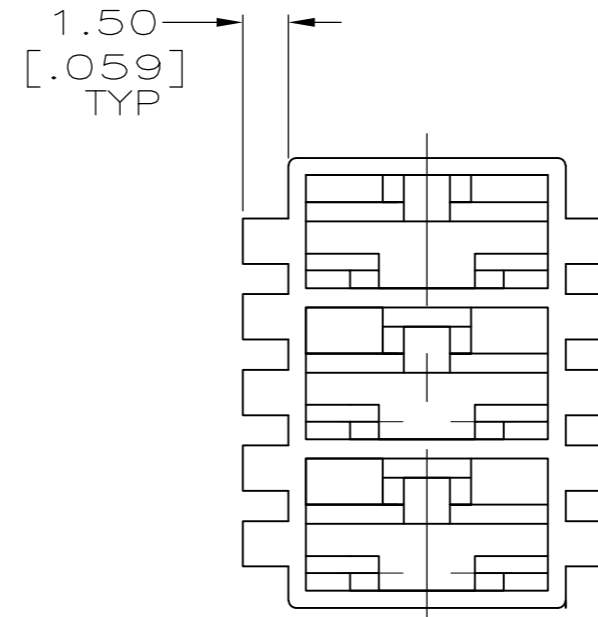
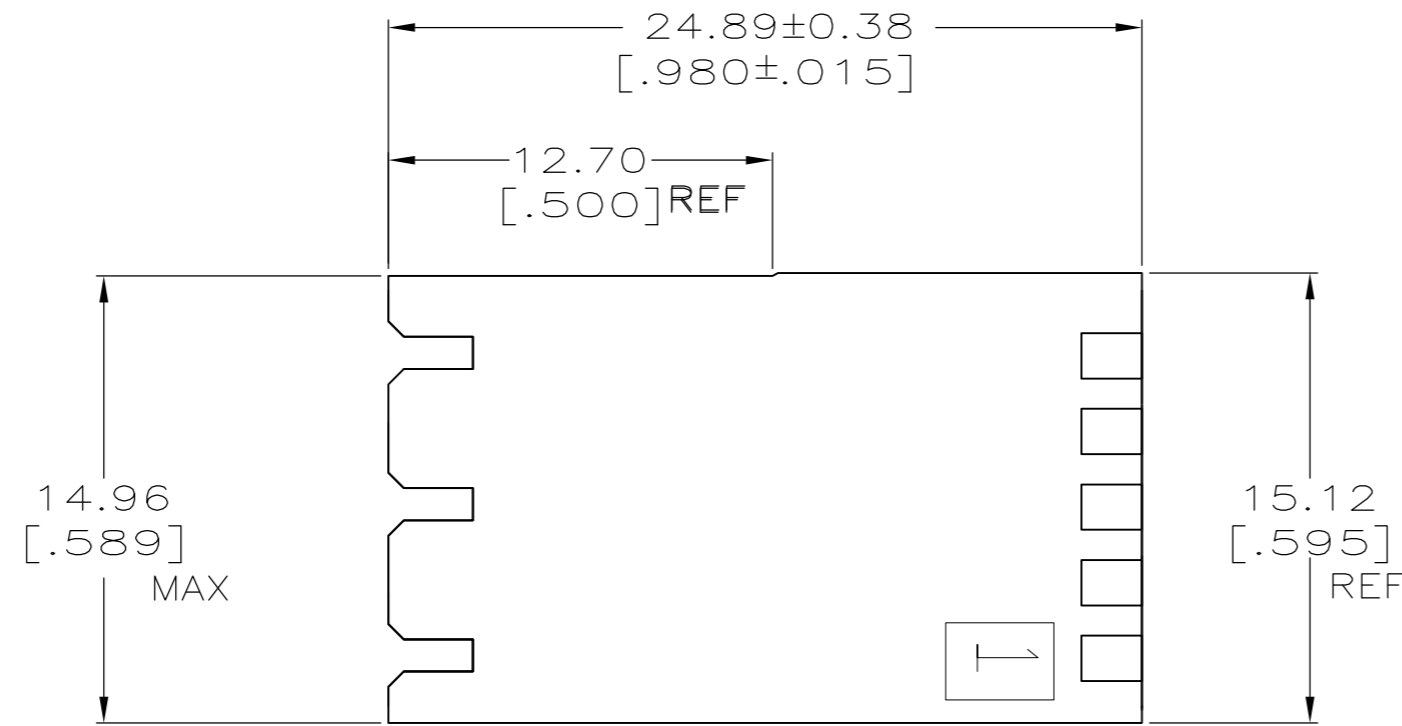
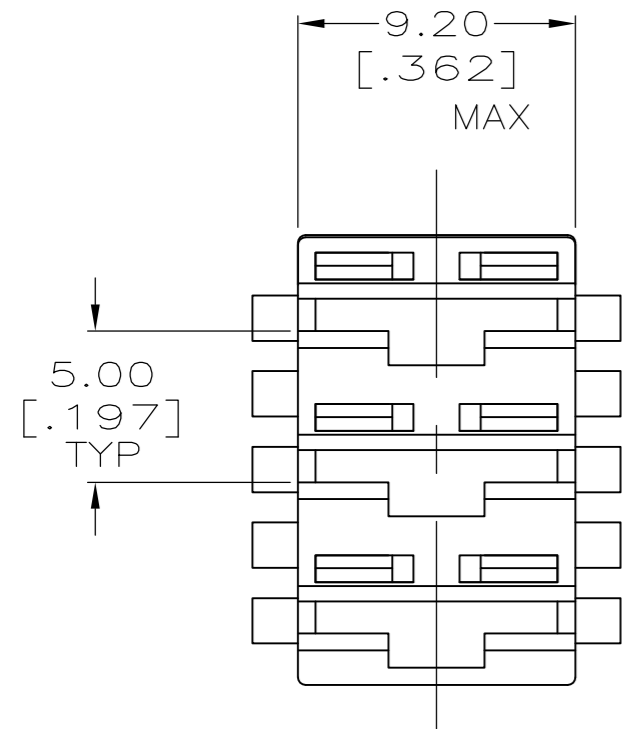
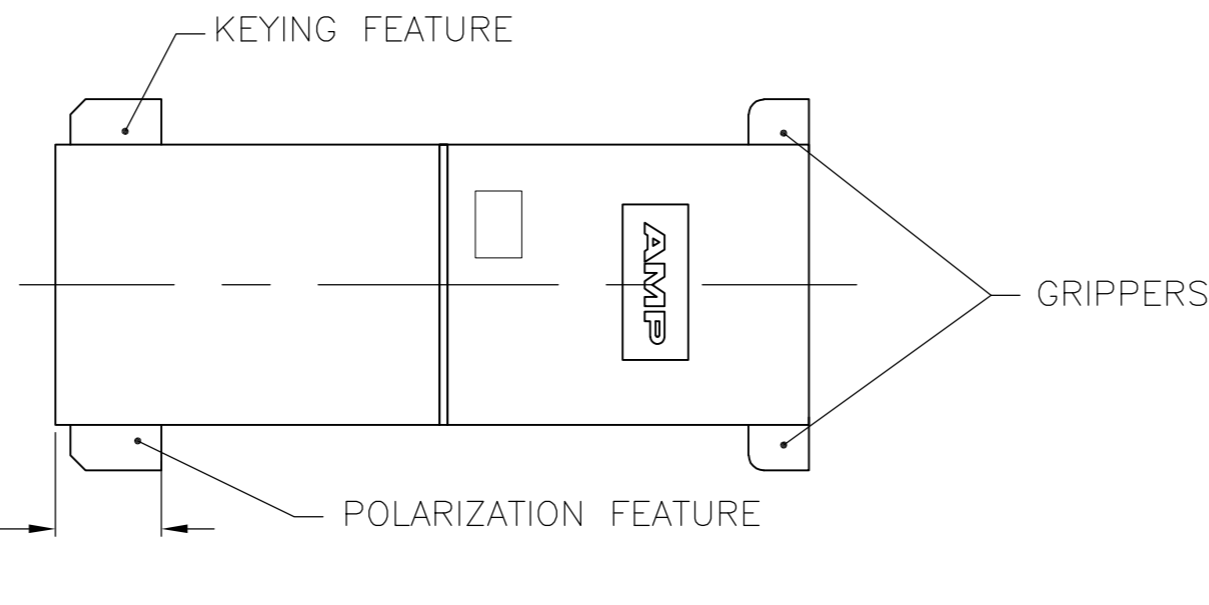


THIS DRAWING IS UNPUBLISHED. RELEASED FOR PUBLICATION
 © COPYRIGHT - By - ALL RIGHTS RESERVED.

REVISIONS				
P	LTR	DESCRIPTION	DATE	APVD
G		REVISED PER ECR-16-001902	22MAR2016	BW JP



1 ACCEPTS RECEPTACLE CONTACTS 1217378 (#22-#18 AWG SINGLE WIRE), 1217094 (#18-#14 AWG SINGLE WIRE) AND 1217095 (TWO #18'S OR TWO #16'S OR A #16 + #18 COMBINATION).

2 FRONT AND BACK VIEWS SHOW ONLY THE GRIPPERS. FOR KEYING AND POLARIZATION FEATURES, SEE SPECIAL FRONT VIEW.

- ③ ACCORDING TO IEC 60335-1, GWEPT 750°C WITHOUT FLAME
- ④ PRELIMINARY - NOT FOR PRODUCTION
- ⑤ PREPRODUCTION- FASR REQUIRED

-	NATURAL	1A,3A	1C	④	9-521205-3
-	BLUE	1C,3D	1B	④	1-521205-9
③	NATURAL	1C, 3C	3B	④	1-521205-1
-	BLACK	NONE	NONE	④	1-521205-0
-	BLUE	1C,3D	1B		521205-9
-	BLUE	1C,3D	2A,3B	④	521205-8
-	NATURAL	1C,3C	3B		521205-7
03-K	NATURAL	1C,3D	3B		521205-6
-	BLUE	1C,2D	1B,3A	④	521205-5
-	BLUE	1D,2C,3D	2A		521205-4
-	BLUE	NONE	NONE	④	521205-3
03-A	NATURAL	1C,2D	1B	④	521205-2
03-A	BLUE	1C,2D	1B		521205-1
RAST 5 DESIGNATION	FINISH/COLOR	KEYING FEATURE	POLARIZATION FEATURE		PART NUMBER

THIS DRAWING IS A CONTROLLED DOCUMENT.		DWN	JR RUTH	10/20/98												
DIMENSIONS: mm [INCHES]		CHK	MS FEHER	10/20/98												
TOLERANCES UNLESS OTHERWISE SPECIFIED:		APVD	J GILLESPIE	10/20/98												
<table border="1"> <tr><td>0 PLC</td><td>± -</td></tr> <tr><td>1 PLC</td><td>± -</td></tr> <tr><td>2 PLC</td><td>± 0.25 [.010]</td></tr> <tr><td>3 PLC</td><td>± -</td></tr> <tr><td>4 PLC</td><td>± -</td></tr> <tr><td>ANGLES</td><td>± -</td></tr> </table>		0 PLC	± -	1 PLC		± -	2 PLC	± 0.25 [.010]	3 PLC	± -	4 PLC	± -	ANGLES	± -	PRODUCT SPEC	
0 PLC	± -															
1 PLC	± -															
2 PLC	± 0.25 [.010]															
3 PLC	± -															
4 PLC	± -															
ANGLES	± -															
MATERIAL	NYLON	FINISH	SEE TABLE	WEIGHT												
CUSTOMER DRAWING		SCALE	4:1	SHEET	1 OF 1											
		SIZE	A2	CAGE CODE	00779											
		DRAWING NO	C=521205		RESTRICTED TO											
		HOUSING, RECEPT, POSITIVE-LOCK, MKIII, 6.35 [.250] SERIES, 3 POSITION														